



**friends of
the earth
Bromley**

April 2020

No 387

Our Next Meeting

????????????????????

Who, What,

When?

**Due to Corona virus and following
advice from Friends of the Earth,
our April meeting has been cancelled.**

Read the full statement inside

Usually 7.30pm The Friends Meeting House, Ravensbourne Road, Bromley

Everyone always welcome when we have a meeting

In this issue:

Next Meeting	2	School Eco Ideas Swap Event	8
Diary Dates	3	Ecosia	9
March Meeting Report	3	Blackheath Scientific Soc	10
Covid-19	5	Co-Ordinators Meeting	11
While You're Isolating	5	Air Quality	12
Millers Mutterings	6	Campaigns	13
Plastic. Any FOE Action?	7	Supplies	18
		List of Roles	19

www.bromleyfoe.co.uk



NEWSLETTER

Next meeting ???

Due to the Corona virus and following advice from Friends of the Earth, our April meeting has been cancelled.

Also cancelled are the Anti-Fracking stall, the Bluebell Walk and the Litter Pick. The Open Garden will not take place this year due to Bill's house move.

All other dates listed on this page will be subject to cancellation/postponement according to the guidelines in place at the time. The situation is changing daily and as we go to press, we are facing the likelihood of older people being advised to self-isolate in their homes, which may be in force when this newsletter is issued.

In the meantime, you are all encouraged to become "Armchair Activists"

Diary Dates

Please note that due to the Coronavirus, many events have had to be cancelled

7th April (Tues) Bromley FoE's monthly meeting - **cancelled**

To 13th April The Great British Spring Clean - **cancelled**. This will now run in the Autumn and we hope to do a litter pick then

22nd April (Wed) BFoE Planning Meeting for campaign reps and key group role holders - **TBC** This will now run in the autumn and we hope to do a litter pick then

25th April (Sat) Bluebell Walk - **cancelled**

5th May (Tues) Bromley FoE's monthly meeting - **TBC**

2nd June (Tues) Bromley FoE's monthly meeting - **TBC**

13th June (Sat) Groundswell - **TBC**

20th June (Sat) 'Play for the Planet'. A musical event at Orpington Liberal Club. A fundraiser for BFoE - **TBC**

28th June (Sun) Keston Countryside Day - **TBC**

This is correct at the time of going to press but obviously will be updated in the next monthly newsletter. If you need any further information on these events in the meantime, you can email us on bromleyfoe@gmail.com

Next Newsletter Copy

Any news, articles, poems, questions, views, articles for sale will all be considered for publication. Please send them to the editor via one of the methods below to arrive not later than **Saturday 18th April**

Post: 17 Everard Avenue, Hayes, Kent BR2 7LR

Email: Robert.clark9@btinternet.com (please write 'Newsletter' in the subject line)

Our March Meeting

Peter Gandolphi

Dr Vanessa Jenkins spoke on The Pharmacy from the Amazonian Rainforest.

Dr Jenkins has been a medical advisor to the government and lecturer, and was talking to us after a trip to the Amazon.

The tropical rainforests are located around the equator, between the Tropics of Cancer and Capricorn. Temperatures are high and rainfall can be more than 2000mm a year.

The Amazon is the largest area of continuous rainforest and is the size of the USA. Rapidly shrinking due to deforestation, it is the world's greatest natural resource, and is the most powerful bio-actively diverse natural phenomenon on the planet.

It supports millions of plant, animal and insect species, and is where drugs like Quinine, steroids, muscle relaxants and anti-cancer drugs have been found, and is where many are awaiting discovery. Presently it is used by the Shamans, and indigenous local people.

There are over 100 pharmaceutical companies interested in potential drugs from these sources at present. Currently, 121 prescription drugs sold worldwide come from plant-derived sources.

25% of western pharmaceuticals are derived from rainforest ingredients.

Less than 1% of these tropical plants have been tested by scientists.

3000 plants have been identified by the US National Cancer Institute as showing activity against cancer cells, 70% of these come from the rainforest. Some of the rainforest products were discussed further.

The Cinchona tree - produces an alkaloid used to treat malaria and for lowering temperature. It is also an analgesic and as an anti-inflammatory. The bark has a bitter taste. For a 1000 years there was no cure for malaria. In the 17th century, malaria was endemic in the marshes around Rome. After many deaths, the new Pope announced that a cure must be found. In 1631, Lima, a Jesuit brother, dispatched a piece of bark to Rome that the locals used against malaria. This was quinine, and in the years that followed, Peruvian bark became a valuable commodity shipped to Europe. It was popular in London for the treatment of the ague (the shivers), after Charles II was cured of malaria using quinine.

By the 1930s, Dutch plantations in Java were producing 22 million pounds of Cinchona bark.

It became the anti-malaria drug of choice until the 1940s when other drugs that could be synthesised took over.

Hippocrates, now regarded as the father of medicine, was the first to describe the disease, and to link it to the time of year and where people lived. It was not until 1897 that the mosquito was found to be the vector of the disease by Ross, who won the Nobel prize.

There are 300-500 million cases of malaria a year and 400,000 deaths. Half the world's population is at risk.

Curare - used as a paralysing poison by South American indigenous people. It is harmless if taken orally, so that poisoned prey can be safely eaten.

Before these muscle relaxants, anaesthetists would need to use a higher dose of the anaesthetic agent, and this risked killing the patient, especially the elderly or those with heart conditions.

Yams - at one time grown for use in drug production such as steroids, contraceptives, and to replicate hormones etc, it was a major industry in Mexico, providing 80% of the production of steroid drugs.

Steroids had been very difficult to extract in the early twenty century. It had taken 40 ox to get enough cortisone to treat one patient for a day. After human steroids were synthesised from the wild yams, the cost of producing human steroids became affordable.

Progesterone is one of the major components of the contraceptive pill, and wild yams provided the precursor to its manufacture and so enabled it to be widely available.

Coca - A cash crop in Argentina, Columbia, Bolivia and Peru. Because of its stimulant effect, Coca leaf used to be used in the original Coca Cola, but in 1903 the Cocaine content was removed.

Millions of people in the Andes, either drink Coca tea or chew the leaves without problems. It is a mild stimulant,

suppressing hunger, aches and pains and is good for dealing with the effects of altitude, with apparently no problems with addiction.

Annatto - is an orange-red colouring agent derived from the seeds of the achiote tree. It is used as a body paint or lipstick and also to impart a yellow or orange colour to margarine, yogurts and cheeses such as Cheddar, Gloucester and Red Leicester.

The developed world has derived 80% of its dietary items from the rainforest, including oranges, lemons, grapefruit, avocados, coconuts, figs, bananas, guavas, pineapples, mangos, tomatoes, corn, potatoes, sugarcane, yams and squash.

500 years ago, around 10 million Indians lived in the Amazon rainforest. Today, fewer than 70,000 survive.

The Rainforest once covered 14% of the Earth's land surface, now its 6%. In the last 50 years, we have lost half of all the tropical rainforest. How many cures to devastating diseases have we already lost?

We are losing 130 species of animals, plants and insects every day, and at the current rate of destruction, all tropical rainforest will be gone within the next 40 years.

Covid-19

Robert Clark

The Coronavirus continues to dominate our lives and is a constant worry, partic-

ularly for anyone with underlying health issues. Statistically not as bad as the flu (at the time of writing this) it is food for thought for all of us.

The way this condition has spread across the world is perhaps a warning to us. It has surely gained apace because of dense population, and spread because of easy international travel. Have we reached a crisis point in the life of humanity? It does seem to remind me of various points made by James Lovelock in his Gaia hypothesis. If we upset the planet too much then we will, in effect, restrict ourselves and our numbers will be trimmed. On a human level, this will be tragic, but on a planetary level, this is what the planet needs to do to stabilise itself.

Coronavirus is a warning shot, a wake-up call. We must be prepared for what will come in the future. To oversimplify, Covid-19 is, for most, like having bad flu; just imagine what we would be doing now if it were more akin to an Ebola like disease, which would be even more lethal.

We cannot continue thinking we can abuse the planet without consequences, without it just applying a little pressure in return. For us, time is a very limiting factor. Earth, however, was here long before we were and will be here long after. We need it, but it does not need us.

I don't mean to be depressing, but wish to point out that this is surely just another sign of how important and urgent

our environmental work is. Keep safe and well. Onward and upward.

While you're Isolating

Futurelearn.com

At www.futurelearn.com there are many free short online courses provided by top universities and organisations. Could this be a good time to explore this site? The courses are completely free and usually last about 2 or 3 weeks and involve about 3-5 hours of study a week. There is reading around a topic, sometimes quizzes and online chats with other students on various topics that are presented on the course.

I have done several and they are usually very well presented and instructive. There is an enormous range of subjects but here are a few of the titles of ones with environmental themes. Climate Change Solutions, Environmental Challenges: Human Impact on the Natural Environment, Sustainable Food Systems, Ecology and Wildlife Conservation. Most of the courses don't expect you to have any previous knowledge of the subject and it says clearly who the course is aimed at. Have a look!

Annette Rose

Libraries

Our libraries are still open as usual, please continue to renew your books. Renewal can be done over the phone by contacting any library <https://www.better.org.uk/library/london/bromley>; online by logging into your

account <https://capitadiscovery.co.uk/bromley/>

or by using the Bromley libraries app,

National Trust

The NT released the following statement on 17th March:

‘The National Trust will, where possible, open as many of its gardens and parks for free, but close its houses, cafes and shops to help the nation fight the spread of the coronavirus.

Following the Prime Minister’s briefing yesterday, Director General Hilary McGrady announced that the National Trust’s pay-for-entry sites including houses, cafes and shops, would close by this Friday (March 20).

McGrady said the charity would work hard to keep as many of the Trust’s gardens and parklands open and free of charge, alongside coast and countryside, to encourage the nation to enjoy open space, if appropriate, during the pandemic, while adhering to the government’s social distancing guidance.

Hilary McGrady said: “The National Trust was founded 125 years ago for the benefit of the entire nation. We want to honour our mission – to enable people and nature to thrive. Over the coming weeks we will do all that we can to keep on providing public benefit through caring for places and giving people access wherever possible.

“While we will close our indoor areas to help fight the spread of coronavirus,

we recognise that people are likely to need access to open space and to nature, beauty and history.”

Any suggestions for this column for the next newsletter would be greatly appreciated bromleyfoe@gmail.com

Nature

Chris Packham is doing several encouraging talks on his facebook page while he is isolating. This includes how to enjoy nature rather than spend too much time on worrying about the disease.

Dance

Oti Mabuse is doing simple dance lessons on Instagram IGTV videos. Dianne Buswell, another Strictly pro, is also posting lessons on there for those housebound. Oti is also posting some on youtube. Just search for Oti Mabuse beginner salsa if you fancy a dance in your lounge. Don’t worry, no one’s watching.

Write Something for This Newsletter

bromleyfoe@gmail.com

Miller’s Mutterings

Chris Miller

Oh dear, do I need to say anything. We are trying to be positive again as the spring seed arrived at the end of February and obviously Peter is now waiting to plant it. No, I am not going to say when but sink holes are starting to appear in the fields.

Peter managed to spray off last year’s oats that had germinated early one

morning in February when there was no wind and rain wasn't forecast until later in the day. It is turning yellow and dying now.

The gable end work has been completed and is looking great: just in negotiations still with insurance company but at least it is weather tight and secure.

I'm afraid that there is not much else to say other than Steve had a new knee and is recovering well.

The weather was bad in March 1916 too. George says that they had continuous rain and wind. One of the large boughs from the elm tree fell onto the granary roof making a large hole and then the snow arrived. He really did have a tough time, not only with the weather, but with labourers too, especially as the married men were now being called up to the war and he had trouble with the market in London as well. The mare had lockjaw.

This month's weather offering is a quote from Charles Dickens:

It was one of the March days when the sun shines hot and the wind blows cold, when it is summer in the light and winter in the shade.

Court Lodge Farm

Plastic. Any FOE Activists/ Actions?

Michael Doyle

The title is the question. Recycling is accepted to be, mainly, either ineffective or a con. But the consumer appetite for compostable food packaging is far ahead of the manufacturers'.

Astonishingly, much organic food, (including products bearing the Royal Seal of Approval, in the name of Prince Charles) are still wrapped in plastic, despite rival firms using sustainable alternatives.

If FOE is happy not to protest in the name of FOE, then is there another organisation which will? Do you have any link or contact?

As a p.s., lots of Waitrose organic, including the Duchy, is boldly marked with the statement that the packaging is not even recyclable. In other words, some thought was given, confirming there was not an oversight, but instead a deliberate choice, to select the most harmful packaging available.

It is astonishing that plastic shopping bags are permitted to be made available in supermarkets, particularly Waitrose, when alternative bags are available from reused or sustainable materials.

It is amazing, too, that the manufacture of plastic buds and wet wipes is al-

lowed, when there is no inherent need for anything but a paper tissue, with or without a small bottle of liquid.

Teachers complain that five-year-olds are still using disposable nappies. They wouldn't be, if the cost was no longer paid by the planet, but instead laid as a high purchase tax on the mothers who choose not to use cloth nappies.

We took it for granted all the eco-aware organisations would have systems to make protests about all pollution, as fast as it is drawn to their combined attention, and that smooth coordinated action plans would achieve joint and multiple action.

Maybe not?

Greener & Cleaner Bromley & Beyond Schools Eco Ideas Swap Event

Parisa Wright

On Tuesday 10th March we hosted our 2nd annual Greener & Cleaner Bromley



& Beyond Schools Eco Ideas Swap Event!

40+ schools, mostly from Bromley borough, but also Greenwich, Lewisham, Bexley and Croydon boroughs, sent delegates to share the changes they've been making to reduce their schools' environmental impact and in turn improve student wellbeing. And then experts presented on those areas too.

From green energy tariffs, to food waste recycling, to tree planting, biodiversity improvement and better air quality, lots going on and lots planned, LET'S ALL SUPPORT OUR LOCAL SCHOOLS with these things and much more :)

The 3 main takeaways to focus on were:

1) switching to green energy (more than halving carbon emission and saving costs) -

<https://drive.google.com/file/d/1oSVJwD6rNtTDSzKnGUOkUddeDhkmdpUK/view>

2) running an anti-idling campaign -

feel free to use our GCB anti-idling leaflet - <https://drive.google.com/file/d/1AHNe6GZUijNipUdGNQN2ssVSbKtH1b76/view>

3) List of schools funding opportunities - <https://drive.google.com/file/d/1jUdhPfiH0hVydN9YdFgkTGo-7FaU4LHE/view>

Feel free to join our GCB Schools Eco Ideas & Support Forum Facebook group to be informed of further events and ask questions/share tips - <https://www.facebook.com/groups/459187921314258/>

Big thank you to Veolia for sponsoring the event and to our experts and incredible volunteers without whom the event couldn't have been possible:

Huge thanks also to logistics queen extraordinaire, Emilie MacMullen, who was the driving force behind the event and talented photographer Donna Ford, who captured it on film for us!

<https://www.facebook.com/donnafordography>

And, as for our experts, a huge thank you for sharing such useful and practical information to Dr Judy John, Andrew Ruck, Tamasin Rhymes, Nadia Smith from SELCE and Sofia Knowles from Veolia.

The final thank you goes to the amazing team at Beckenham Place Mansion led by the fantastic Helen Corke. Your continued support means we can keep running these events for the community (and the planet!) ♡

(These web links can be a bit tricky in the printed form. If you want an electronic copy which is more clickable then please let us know. bromleyfoe@gmail.com)

Ecosia

You may not have heard of Ecosia. It is an alternative internet search engine



akin to Google or Bing. It's not the web browser itself but the page that appears when you open your Google Chrome or Microsoft Bing.

The beauty of Ecosia is that each time you search the internet you are unconsciously donating money to plant trees around the world. The way it works is that whenever you do a search the owner of the search engine makes money from the adverts that get shown in side panels, headers etc. Ecosia use the profit from this revenue to fund tree planting across the globe.

Trees are specially selected depending on their situation. Some stabilise nitrogen in the soil, others are fruit trees which benefit for locals and wildlife, for example.

The number of trees being planted is getting near 90 million to date across over 9000 sites. If you'd like to find out more then just go to www.ecosia.co/info or just type Ecosia into Youtube.

Blackheath Scientific Society

Sheila Brown, with additions from Ann Garrett

Speaker: Dr Paul Nathanall, MD LQM Ltd

Earthquakes, Tremors and Hydraulic Fracturing

Seven members of Bromley FoE were present for the talk on January 17th and a Q&A session at the end.

Dr Nathanall introduced himself as a land contamination expert and MD of the company Land Quality Management.

He prefaced his talk by saying that things had changed in recent months, that we now have the moratorium on fracking and the climate emergency has been declared. He was not keen on the word 'fracking' but preferred 'hydraulic fracturing' and declared that he was neither 'for' nor 'against' the procedure and investigated all paths. Whilst chairing a parliamentary group on shale gas, he said he had managed to upset both sides!

Gas had been used as a fuel for years and many people in the room would surely cook by it and use it to heat their homes. We'd had town gas, then in the 1970s natural gas, and now something called Bowland Shale had been discovered. He described shale as a mixture of mud and slate, a compound made up of compacted debris and organic matter which produced methane. It also had low permeability. Because it is so difficult to access, extraction has only been possible for the last ten years.

What are Earthquakes? The sudden release of energy from plates or faults. Tremors are low to moderate earthquakes. People might be surprised to hear that the UK experiences earth-

quakes all the time, but rarely major. There was a significant one in Colchester in the 1800s with a magnitude of 5. More recently small earthquakes have been caused by fracking, due to which Cuadrilla was ordered to suspend fracking in Lancashire. The magnitude of an earthquake is measured on the Richter scale, which is logarithmic. Hence each additional 1 point on the Richter scale signifies 31 times more energy.

Some of our largest shale reserves are located under our largest cities! This is one of the main reasons that there is a moratorium on fracking, as the gas will be hard to extract. Another is due to the economic situation rather than the risks involved.

Recently it has been established that the UK's shale gas reserves are only one tenth as large as had previously been thought, which begs the question "is it worth it" ?

One of the advantages of shale gas is that it provides energy security, but this is thought to be outweighed by the evidence of vast amounts of pollution both below and above ground. The film 'Gasland' shows plenty of evidence of this, although some of the statistical information in the film is thought to be exaggerated.

In summary, Dr Nathanall said that he

thought the Government has no plans to end the moratorium on fracking, and emphasised again that this is mainly due to the high costs involved.

In response to a question by our group expressing concerns about the pollution caused by 'The Gatwick Gusher' at Horse Hill, where there is drilling for oil using the same process as fracking, Dr Nathanaall said that drilling company UK Oil and Gas/ Horse Hill Developments are legally required to measure the air pollution, and that this is something that should be pursued by our FoE group, Surrey Against Fracking and campaigners at the site.

Local Groups Co-ordinators Meeting

Ann Garrett

The Printworks, February 17th report/ notes

There were 13 people at this meeting. After introductions there were local reports.

Bromley FoE - reported on events such as campaign stalls, numbers at AGM, website/social media development, local groups contacts, fund-raising, Environmental Alliance, Biggin Hill airport expansion. support for Horse Hill and walks/visits/talks. The challenge was maintaining such a large group.

Other groups mentioned showing of the

film 'Disruption', links with XR, local climate actions, school talks and Heathrow expansion.

Information was given by Ted Burke and Fiona Whyte about support for local FoE groups and who to contact. This was followed by a FoE website update, and included development workshops, training opportunities and policies e.g safe guarding. There is a local group support fund of up to £500 per year. Training can take place at the Printworks or at local group's venues.

Jenny Bates spoke about the mayoral elections via a link, emphasising the importance of the Climate Action Plan for London, which shows vision, builds leadership opportunities, works with policy and insights units, and tackles the climate emergency.

She went on to reference important groups such as Mums for Lungs, Living Streets and other social community organisations, but also mentioned the challenges such as the HS2 and Silvertown Tunnel approvals and the difficulties arising from extreme weather conditions.

Jenny then stressed the importance of working for divestment, zero carbon homes, park cities, improvements in recycling, promotion of green jobs, and opposing climate-wrecking developments.

Finally, Fiona Whyte spoke about the Tyndall Centre which has produced a carbon budget for London e.g. how London can make its contribution towards the Paris Climate Change Agreement, and the importance of forming local climate action groups and devising local climate action plans.

Air Quality

Parisa Wright on behalf of the Climate Alliance

A heartening effort from Sir Bob Neill who has taken our letters and pushed our request about new pm2.5 air pollution limits on the floor of Parliament:

https://twitter.com/neill_bob/status/1232724452196126722?s=19

Helping us ask the makers of the new UK Environment Bill to follow the World Health Organisation's advice of a pm2.5 pollution limit of 10, rather than the dreadful limit of 25 that we currently have!

PM2.5 has been labelled by the World Health Organisation as "the most health-harmful air pollutant". It's so tiny that pm2.5 gets into the bloodstream via the lungs as we breathe it in - and then it causes all sorts of trouble.

It's worst of all for babies and children who breathe faster and whose bodies are still developing and are more damaged by pollutants in the bloodstream.

Hopefully Sir Bob can help encourage a more wellbeing focused approach to pm2.5 pollution and even the start of

proper investment in monitoring of pm2.5 in Bromley Borough and beyond.

All boroughs need to make real efforts to keep levels down and to invest in pm2.5 monitoring so we can most accurately assess levels and at the same time better inform the public about the air quality hazards of bonfires, wood burning stoves and fireplaces, idling and also driving where walking, cycling or public transport is possible - and of course improve the infrastructure to facilitate the latter.

We are all keen to reduce the 6% mortality rate from air pollution in Bromley borough (and beyond!!) and the much higher percentage of air quality related asthma, circulatory, developmental and respiratory damage/illness.

It's simple, we need to start monitoring for pm2.5 in the borough, especially around schools, and hopefully Bromley council's draft Air Quality Action Plan (due to be released next Month) will reflect this.

Fingers crossed!

Campaigns

Planning Monitoring Team

Checking the monthly planning applications that the council publish is a really interesting job especially if you know

your local area well. The current team are looking for help from people who would be willing to keep an eye on the applications in their own back yard from the comfort of your home, and alert them to anything which may require us to make an official comment.

If you would like to find out a little more about what is involved, then please contact Tamara Galloway at: tamaragalloway@yahoo.com

Climate, Energy and Transport

Ann Garrett

Impact of Australian Fires

NASA scientists have reported that smoke from the fires which raged for months in Australia, causing the destruction of thousands of homes and millions of creatures, did a lap round the earth. By January 8th the smoke had crossed South America and was half way round. It had effects on the atmosphere and contributed to pollution.

Experts warned that climate change had exacerbated the fires, which were driven by the Indian Ocean dipole - an event where sea surface temperatures are warmer in the western half of the ocean and cooler in the east. The difference between the two was the

Reuse

If you have any items that you no longer need and that could be of use to someone then please let us know and we will publish them in the Newsletter. Alternatively, you could bring them along to our monthly meeting and put them on the table in reception . Any donations to BFoE from sales will be greatly appreciated.

highest in 60 years.

Climate Talks and Youth Activists

Greta Thunberg met the European Commission President Ursula von der Leyen in Brussels on March 4th. The commission was due to unveil plans for a law aimed at making the bloc carbon neutral by 2050. However, Thunberg and other youth activists criticised this as being too slow and dismissed the move, calling for Europe to curb all existing Co2 emissions 'allowances'.

Recent youth strike demonstrations have taken place in Bristol and then throughout the country on March 14th.

Bromley FoE supported the strike in Parliament Square on February 14th [see photo of our banner there with some young people from Brixton] where it was encouraging to see so much care and determination.

Many people took photos of our banner and stopped for discussion when

we held it out at the Nelson Mandela statue.

Lewisham Climate Plan

Lewisham Council has published an action plan just over a year after it announced a climate emergency.

The council, which accounts for about 3% of carbon emissions in Lewisham, is aiming to make the borough carbon neutral by 2030.

it expects the cost of reaching that target to be around £1.6 million for everyone involved.

The climate emergency action is divided into 5 main areas - leadership, housing, transport, becoming greener, inspiring learning, and lobbying.

Some of the changes proposed include only serving vegan food at corporate events, and increasing the number of vegan options in schools.



Nuclear Energy

It is nine years since the nuclear meltdown in Fukushima, and for those nine years the Japanese government have downplayed the seriousness of the situation.

More evidence has emerged of the spread of the highly radioactive micro-particles to which those attending the Olympic games in Tokyo could be exposed - though these could well be cancelled owing to Covid -19.

The nuclear plant is still very dangerous, while further dangers still lurk in food, water, soil and air.

This cover up could be to protect the nuclear industry and its embedded bureaucrats.

Transport

Aviation News

Gatwick Airport has said that it will push ahead with plans for a second full-time runway, after deepening business concern that Heathrow's expansion hopes have been dealt a fatal blow by the High Court decision.

A consultation will be launched in April/May which will be the first step towards bringing Gatwick's spare Northern runway into full-time use. This will increase capacity and enable 15 more flights an hour, reaching a total of 70 million passengers by 2023.

Ironically - the Coronavirus restrictions and cancellation of much air travel throughout the world will be leading to

a reduction in pollution from aviation fuel.

Reduction in road traffic during this time will also improve air quality. Optimistically, despite the serious Covid - 19 health situation, if certain restrictions continue in some form over the months/ years to come, there could be benefits to the environment.

C-Charge Zone Speed Limit

The speed limit on main roads within the congestion charge zone is being cut to 20mph ahead of schedule. This is part of Mayor Sadiq Khan's Vision Zero policy to eradicate road deaths and reduce pollution.

Speed cameras will be recalibrated and there will be police enforcement patrols. Drivers who break the speed limit will be subject to a minimum £100 fine and three points on their licence.

Plastics in the Environment

Annette Rose

Here are 5 things you may not know about plastics and the plastics campaign.

1 Arsenal Football Club has saved more than 500,000 plastic cups from going to land fill this season by introducing a re-usable cup scheme.

2 A group from National FoE handed in a petition to 10 Downing Street in March calling for tougher action on ocean plastics.

3 Plastics are usually recycled into a low-

er grade product. For example into polyester to make fleece jumpers. The fleece sheds tiny plastic fibres that get into the environment.

4.Salt, beer, seafood and human stools have all been found to contain tiny plastics.

5.In the recent budget, it was announced there would be a plastic packaging tax from April 2022.

Nature/Trees

Diana Hurd

On Saturday 14 March, the Friends of Havelock Recreation Ground held a Tree Planting and Nature Day. Volunteers from the Havelock Friends, Raglan School and Bromley Friends of

the Earth planted 8 mature trees, which included a disease-resistant elm, a willow and other native trees like silver birch and wild cherry. Some effort was required to dig the holes and get the trees out of their pots and to get the



stakes into the ground, but with so many willing volunteers the job was done by lunchtime. The trees will now just need watering in periods of prolonged drought for the next year or so.

This proves that willing volunteers around the country could help to add much needed tree cover to our environment and have fun and exercise in the fresh air



whilst doing so. Lots of children were involved and they had a lovely time learning about nature and creating little shelters for the displaced worms! Havelock Recreation Ground now has a path flanked on both sides by a variety of beautiful, native trees. Working together in this way, local people are improving their local environment, enhancing the habitats in the park for wildlife and doing their bit for the planet.

E-Facts for the Month

Soils are a lesser known part of the puzzle for carbon storage. They contain more carbon than all the Earth's vegetation and atmosphere combined.

Peat Bogs are part of this, and are the largest and most efficient land based store of carbon, and the world's second largest carbon store after the oceans.

Peat bogs store an average of 10 times more carbon than any other ecosystem including forests. Although they cover only 3% of the world's land mass, they hold around 30% of all carbon held on land.

If the bog is allowed to dry out, such as following extraction, the carbon that was locked away will be released as carbon dioxide. A loss of 5% of UK peatland carbon would equal the UK's total annual greenhouse gas emissions.

Scottish peat bogs store 1.7 billion tonnes of carbon, equivalent to 140 years of Scotland's total annual greenhouse gas emissions.

Supplies That Don't Cost the Earth

This is a regular reference point for useful and practical resources, helping us to sustain the greenest lifestyles we can. Please note that none of these are recommendations from Bromley or National FoE, they are just suggested by BFoE members. Any suggestions or reviews gratefully received. Ed.

www.greenfinder.co.uk - a really useful directory of environmental companies for all kinds of things.

Naturallythinking Unit 2 Mill Lane Trading Estate, Mill Lane, Croydon, CR0 4AA
020 3856 3588
www.naturallythinking.com

<https://www.ethicalsuperstore.com/>

Facebook

Greener & Cleaner Bromley (& Beyond)
Shares tips and resources for residents or the borough. Consumer action!

Hayes Life Freebeecyclers There may be something similar in your area - <https://groups.freecycle.org/group/BromleyUK/posts/all>

Shops

Wickham Food Centre WFC opposite M&S West Wickham. Sells mostly loose fruit, veg and groceries. Low packaging

Bromley International Food Centre
237-239 High St, Bromley BR1 (opposite the Bromley Picturehouse Cinema) may provide the most zero waste food offerings in central Bromley?!

Take your own tupperware and produce bags and let us know what you think!

Obviously they still have packaged stuff too, but a LOT more zw options than most supermarkets!

The Turkish Food Centre TFC opposite the Catford Bus Depot in Bellingham is also good. Not as much in terms of loose nuts but lots on offer re zw fruit, veg, olives, bread, cheese and meat.

South London Shop Without Packaging SWOP, 7 Burnt Ash Lane, Lee.

Carnivore and Herbivore Shops in

Membership Renewal

If you are unsure about when your BFoE membership is up for renewal and you receive your newsletter by post then you can find the renewal date on your address label.

If you have any queries regarding this or you receive your newsletter via email then let us know at our usual email address bromleyfoe@gmail.com

Southborough Lane, Bromley near the library.

Crystal Palace Food Market, Haynes Lane, SE19 3AN. facebook - 'The Store Cupboard'.

Apps

Karma and **TooGoodToGo**. Both allow you to purchase spare food from local restaurants at short notice and very reduced prices.

List Of Roles

All postholders can be contacted via the groups email address:

bromleyfoe@gmail.com

Acting Co-ordinators/Mentors:

Sheila Brown 01689 851605

Ann Garrett 020 8460 1295

Secretary: Vacant

Treasurer:

Sheila Brown

Press Team:

Ann Garrett

Programme Organiser:

Sheila Brown

Outings Organisers:

John & Sue Bocock 0208 290 0485

Merchandising: Anne Clark

Membership Secretary:

Dan Sloan 07414 920920

Newsletter Production:

Dan Sloan

Instagram and Twitter Admin:

Emmanuelle Coetzee

Fundraising Officer:

Bill Priestley 01689 820469

Admin Team:

Judy Palmer, Rob Clark, Annette Rose

Web Site & Technical Support:

Peter Gandolfi, Mary Ingledew

Refreshments

Mary Ingledew, Sylvia Chance

Meeting Reporters:

John & Sue Bocock, Anne Clark, Annette Rose, Peter Gandolfi, Sheila Brown - further volunteers for this team would be welcomed

Campaigns (Contact via group email)

Nature/Trees:

Diana Hurd, Judy Palmer, Annette Rose, Tamara Galloway, Ruth Fabricant

Anti Fracking:

Ann Garrett, John Catlin

Plastics:

Annette Rose, Sheila Brown, Emmanuelle Coetzee, Ruth Gardner, Judy Palmer, Ruth Fabricant, Viv Gardiner

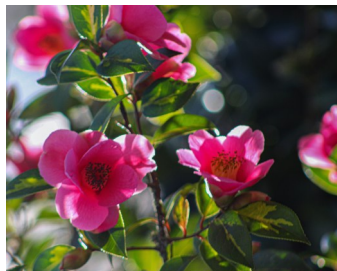
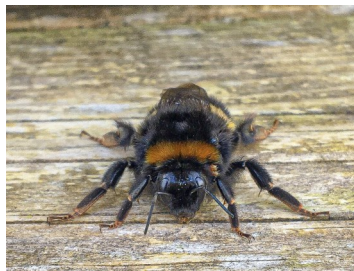
Climate:


Sam Gee, Ann Garrett, Tamara Galloway, Ruth Fabricant, Judy Palmer (liaison with Climate Alliance)

Planning Monitor: Tamara Galloway, Ann Garrett

Newsletter Editor:

Rob Clark 020 8289 1503
robert.clark9@btinternet.com



 @photographybybethan

Non-members Section

If you are not a member of Bromley Friends of the Earth (BFoE) then hello to you. We are an active local group affiliated to national Friends of the Earth concerned with promoting the understanding of environmental issues. We also campaign on these issues at a local, national and international level.

If you would like to know more about who we are and what we do, please contact either of our acting co-ordinators Sheila Brown or Ann Garrett (their details are inside the back page of this newsletter.) Alternatively you can come along to one of our monthly meetings held on the first Tuesday of every month at the Friends Meeting House, Ravensbourne Road, Bromley - that's towards the bottom of the High Street, on the right going down. If you would like to join us then please fill in and send us the form below.

Membership Application/Renewal* Form (*delete as appropriate)

I would like to support Bromley Friends of the Earth and enclose my annual subscription (£8 single/£15 couple/family.) I also enclose a donation (optional) of £..... to help towards the work of our local group.

Name:

Address:

Post Code: Phone No:

Email address:

Do you have any hobbies or interests that may be of use to the group?

.....

Please return this form to: Bromley FoE, 2 Bucks Cross Cottages, Chelsfield Village, Orpington, Kent BR6 7RN. Other enquiries regarding the group should be sent to bromleyfoe@gmail.com or contact one of our co-ordinators via their details inside.