



April 2024

No 433

Our next meeting is on
Tuesday 2nd April at 7.30pm
In your own home using ZOOM

Professor Frank Kelly

Chair in Community Health and Policy, within the School of Public Health in a new global centre of air pollution research

will discuss the question

Is London's Air Quality Improving?

From SMOG to ULEZ

*This will be an internet **Zoom meeting only** so please **do not** go along to the hall as usual. Try it, it's easier than you'd think!*

To join the meeting please use these joining details and the link below:

[https://us02web.zoom.us/j/83468251465?
pwd=WVw5V2ZWdDdvVm1lERKODNIYUjJ3Zz09](https://us02web.zoom.us/j/83468251465?pwd=WVw5V2ZWdDdvVm1lERKODNIYUjJ3Zz09)

Meeting ID: 834 6825 1465

Passcode: 609944

or dial: 0208 080 6591 or 0203 901 7895

IN THIS ISSUE:

Future Meetings & Diary Dates	2	Great Big Green Week 2024	16
Next Newsletter Copy Date	2	Bromley FoE Needs a Treasurer	16
Professor Frank Kelly bio	3	Orpington Bus Proposals update	17
March Meeting Report	4	Interesting Article Links	17
Climate Campaign	7	More on Warm Homes	18
Energy Campaign	7	Red Kite Spotting	19
Development and Planning	8	Supplies Don't Cost The Earth	20
Transport Campaign	9	The Big Plastic Count	21
New Forests in Bromley	10	Greener & Cleaner Hub	22
Planet over Profit Campaign	10	Reviving Our Re-User Column	23
Planning Consent for 685 Homes	10	Greener Greenwich & Asian Hornet	23
Tree Planting Projects This Spring	11	Social Justice Cards	26
Great British Spring Clean 2024	13	List of Roles and Contacts	27
Black Mustard	14	Non Members Section	28
CAT to Close to Day Visitors	15	Membership Application/Renew Form	28

www.bromleyfoe.co.uk



NEWSLETTER



Future Meetings & Diary Dates

If you can't join the April Zoom meeting, or just find yourself with some spare time, perhaps we can encourage you to become 'Armchair Activists'. Do your own bit of campaigning, maybe inspired by something in our newsletters, and let us know what response you get. Or if any item here makes you angry, delights you, enthuses you, or causes you any emotion other than apathy, then please jot down a line or two and send it to the newsletter editor (see contact details below).

2nd April (Tuesday) Bromley FoE Monthly Meeting on ZOOM at 7.30pm.

Our April speaker is Professor Frank Kelly, postponed from January 'From SMOG to ULEZ'.

13th April (Saturday) Campaigning Stall from 1pm - 3pm

A campaigning stall will be held at the Bromley High Street end of the Mall Precinct

7th May (Tuesday) Bromley FoE Monthly Meeting at The Friends Meeting House, Ravensbourne Road, Bromley at 7.30pm.

Our May Speaker is Jeff Royce, Friends of Bromley Town Parks and Gardens

4th June (Tuesday) Bromley FoE Monthly Meeting at The Friends Meeting House, Ravensbourne Road, Bromley at 7.30pm.

Our June Speaker is Councillor Will Rowlands, Portfolio Holder for Environment

8th-16th June Great Big Green Week.

A week of Friends of the Earth community action. Details to follow.

22nd June (Saturday) Friends of the Earth Bromley Garden Party.

The Orpington Liberal Club Orpington. 1.30pm-5pm.

This is all correct when going to press, but may be updated in the next newsletter. If you need further information on any events, you can email us at

bromleyfoe@gmail.com

Note that there are several internet links in this newsletter which may be impractical to type into a browser. If you would like access to any of them, then please let us know and we will send you an electronic copy of the newsletter where you can just click on, or copy & paste, the links.



Next Newsletter Copy Date

Please send all your news, articles, poems, questions, views, articles for sale to the editor via one of the methods below to arrive not later than **Friday 19th April 2024**

Post: 2 Bucks Cross Cottages, Chelsfield Village, Orpington. Kent. BR6 7RN

Email: stopkillingtheplanet@gmail.com (Please write '**Newsletter**' in the subject line)

Disclaimer: Please note that any opinions expressed in this Newsletter are not necessarily those of Bromley Friends of the Earth or of Friends of the Earth.



Professor Frank Kelly - *Our April Speaker*



Professor Frank Kelly, PhD FKC FRSB FRSC FMedSci FEnvSc FRCP (Hons) holds the inaugural Humphrey Battcock Chair in Community Health and Policy, within the School of Public Health in a new global centre of air pollution research. He previously served as Chair of Environmental Health at King's College London, where he was Director of the Environmental Research Group, Director of the NIHR Health Protection Research Unit in Health Impact of Environmental Hazards and Deputy Director of the MRC Centre for Environment & Health.

The substantial research activity, over which he presides, spans all aspects of air pollution research from toxicology through to science policy. The experimental research examines the toxicity of airborne particulate matter, diesel and biodiesel exhaust emissions, wood smoke and identifies of biomarkers of exposure. A new area of

investigation is ambient microplastics, where work is focusing on their identification, detection and potential health effects. He has led studies on the urban airshed within London, including the impact of the introduction of London's Congestion Charging Zone and the Ultra Low Emission Zone. During his leadership at King's, the [London Air Quality Network](#) developed into a first class dissemination and education resource for London residents.

New areas of research interest include, 1) the impact of climate change air quality and hence health through increasing harmful ground-level ozone and increasing exposure to allergens like pollen and 2) indoor air quality. Children growing up in the UK today represent an 'indoor child generation', with most of their activities taking place within enclosed spaces, primarily homes and schools, with chemically diverse and often complex air quality environments. Even so, despite its importance in human exposure terms, links between indoor air quality in its widest sense and public health is a relatively under-researched area.

Professor Kelly has published over 450 peer-reviewed papers as well as many conference papers and books (as author or editor) on the toxicology and health effects of ozone, nitrogen dioxide and particulate pollution. He provides policy support to the World Health Organisation on air pollution issues and is a member of the Health Effects Institute (HEI) Review Committee. He is past Chairman of COMEAP, the UK's Department of Health's Expert Committee on the Medical Effects of Air Pollutants, past President of the European Society for Free Radical Research and past Chairman of the British Association for Lung Research.



March Meeting Report - *Helen Loughlin*

This month Ian Preston, a retrofit coordinator for Ecofurb, gave us a talk entitled 'An introduction to retrofitting your home'.

Ian explained that Ecofurb is a low carbon home renovation service which can help homeowners plan energy efficiency improvements and give impartial advice. It is also able to put homeowners in touch with local, vetted installers. It is a joint project of two companies: Parity Projects, an environment consultant service, which uses data, science and analysis to help its clients deliver energy efficiency efficiently and effectively; and RetrofitWorks, a not-for-profit cooperative whose stakeholders include retrofit coordinators and installers, which offers its services to help homeowners lower energy bills, create healthy homes and achieve Net Zero.

Ian said that Ecofurb helps people to take a coordinated approach to retrofitting their homes rather than doing things piecemeal. They consider the requirements of the whole building and their approach ensures that measures are taken in the correct order, so as to avoid unintended consequences. For example, measures should be taken to increase energy efficiency, through ensuring the home is adequately insulated, before installing energy sources, such as heat pumps. Attention is given to occupancy comfort, health and wellbeing and one important aspect is to ensure adequate ventilation to allow water vapour to escape and avoid unintended consequences such as damp, mould and fungus. Ian said that most

houses are inadequately ventilated and Ecofurb will often recommend a low-cost ventilation upgrade alongside energy efficiency measures.

Ian described the Ecofurb process. Ecofurb will come and survey a home and take measurements, notes and photos. Next, they model the home as it is, look at where energy escapes and analyse potential energy efficiency measures. These may include such measures as removing secondary heaters, blocking open chimneys, installing low-energy lighting, double glazing windows, insulating the loft, floors and doors, installing humidity extractors in kitchens and wet-rooms and installing solar panels |(where this is possible) and heat pumps. Recommendations are set down in an Ecofurb Whole House Plan and these are discussed with the client. Ecofurb will take account of what the client can afford immediately and in the future. The Whole House Plan sets out projected energy performance improvements for the home, giving before and after comparisons for its energy rating, fuel bills and total carbon dioxide measurements. Advice is provided on the best, most cost-effective way of phasing desired improvements, for example by ensuring that all jobs requiring scaffolding are done together or by arranging for windows to be installed before solid walls are insulated. Each phase of proposed measures is grouped and estimated costs, savings and improvements in the energy rating are all set out. Ecofurb can then refer the homeowner to relevant installers, through the RetrofitWorks cooperative mentioned above, and quotes can be obtained.

Ian then talked about some of the challenges to retrofit. These include installer availability (as the best installers are usually busiest), costs, general lack of funding for those wishing to retrofit homes (other than some funds for replacing boilers and installing heat pumps), inconsistency of planning regulations between different local authorities, and Government inconsistency (in particular, announcing plans for which industry stakeholders prepare, then deciding not to continue with them).

Ian went into more detail about the role of a retrofit coordinator. Essentially, they ensure that a cohesive retrofit plan is designed and implemented for a home and that all elements of domestic retrofit are properly managed and coordinated. They evaluate proposed measures, make recommendations and produce a Whole House Plan, which sets the requirements for retrofit design. They review quotes throughout the process and oversee and sign off the installation of energy-efficiency measures. Ecofurb can recommend installers, as mentioned above. Otherwise, Ian recommended using installers accredited by TrustMark, a Government approved scheme, or installers certified under the Microgeneration Certification Scheme (MCS), all of whom would be sure to follow the proper procedures.

Ian then took questions from the audience, some of which related to individual properties. He said that retrofitting a home was not about saving money in the short term, as payback could take a long time, but about reducing a home's carbon levels. This was starting to help make homes more valuable, as people gradually became

more aware of the importance of a home's energy efficiency rating. We thanked Ian for his useful and informative talk. Those wishing to find out more about Ecofurb can visit their website at www.ecofurb.com

2nd Half of Meeting, after the tea break

CAMPAIGNS

• Nature and Environment

Rob reported that on Saturday 24 February, he and Diana had joined with local residents in Penge to help with the planting of a tiny forest in Cator Park. On Saturday 2 March, they had planted some trees which they had nurtured themselves in Havelock Recreation Ground.

• Planet over Profit

Planet over Profit is a campaign supported by Friends of the Earth which calls on MPs to support a new UK Business, Human Rights and Environment law to hold UK companies and the public sector legally accountable if they fail to prevent human rights abuses or environmental harm. Annette, who had attended a training webinar on 24 January, said that the campaign was linking deforestation to the International Day of Forests to be held on 21 March and wanted people to contact their MPs around this time in support of the campaign. She would be sending out an email via the admin team, asking members to contact their MPs using a standard form of words. She had also ordered 100 post cards produced by Friends of the Earth, for people to send to their MPs in support of the campaign. These would be available at the Bromley Friends of the Earth garden party in June.

• **Development and Planning**

Rob reported that Kevin Dykes, the new lead on development and planning for Bromley FoE, had submitted comments on behalf of the Development and Planning campaign team, expressing concern about a development suggestion involving building a number of houses next to The Spa, Beckenham. The proposals entirely failed to mention energy standards.

• **Anti-racism**

In Ruth's absence, Helen reported that a Stand Up to Racism march and rally would be taking part in London on Saturday 16 March in support of the UN Anti-Racism Day.

Membership Drive

Dan reported that as part of a membership drive, all BFoE members would receive an extra newsletter in April so they could forward this to a friend or family member. He was also targeting former members of the group and asking them to consider rejoining. He had produced new membership application forms the size of a business card, which would be easier to distribute and harder to lose.

Future Meetings and Speakers

Sheila said that Professor Frank Kelly would be speaking at the April zoom meeting on the subject "From SMOG to ULEZ" and Jeff Royce, from the Friends of Bromley Towns and Gardens, would be speaking at the May meeting. She would ask Councillor Will Rowlands, the new Environment Portfolio holder for Bromley Council, if he could speak to the group at the June meeting.

The Great British Spring Clean (15-31 March)

Annette said she would be encouraging people to take part in their own local spring cleans rather than organising a litter pick specifically for BFoE members. She would let members know via the admin team of any spring cleans happening locally. She asked people to take photos for the newsletter if they got involved.

Garden Party Fundraiser (22 June) and Great Big Green Week (8-16 June)

Annette reported that planning was well underway and these events would be combined. It had been agreed that it would be simpler to request donations at the garden party rather than attempt to charge an entrance fee. The line up of performers was looking good. Stalls at the garden party would include a plant stall, a brick-a-brack stall, two craft stalls and a Save the Sea Creatures stall. There would also be a raffle and the sale of tea and cakes. It was hoped that there would be a display on fast fashion, which could link to the Planet over Profit campaign, and that the warm homes quilt could be displayed. As the theme of the Great Big Green Week was swapping, people would be encouraged to bring up to three items of good quality clothing and swap them through an organised system.

Walks and outings

Sue said that she and John were considering the possibility of a visit to the Knepp Estate, but would first carry out a recce with the Gandolfis to see whether this was feasible/affordable. Other trips they were investigating were Morden Hall Park (NT property); Derry Downs and the Croft Tea Rooms; the Horniman Gardens in Forest Hill; and a bluebell walk. No dates had yet been finalised.



Climate Campaign - Ann Garrett

Scientists are working on an unusual plan to prevent Antarctica glaciers from melting. They want to build a set of giant underwater curtains in front of ice sheets to protect them from being eroded by warm sea water.

Ice in polar regions is now disappearing at record rates as global warming intensifies, and urgent action is needed to slow down this loss, the international groups of scientists have warned.

Their proposed solution is the construction of a 100km - long curtain that would be anchored to the bed of the Amundsen Sea. It would rise by about 200m from the ocean floor.

The Seabed Curtain project, if

implemented would be one of the biggest geo-engineering programmes ever undertaken, but seems vital, as the melting of the glaciers is likely to trigger catastrophic flooding around the planet and result in hundreds of millions of people losing their homes.

Another idea would be to use air for protecting glaciers. A pipe with holes drilled along it - would be laid along the seabed and air pumped through.

If these projects work, countries throughout the world will have an enormous debt to pay to the scientists of the University of Lapland, who are pioneering these projects.



Energy Campaign - Ann Garrett

A mile from the village of Theddlethorpe in Lincolnshire, there are plans to dig a nuclear waste dump. This is one of three sites being examined for a possible geological disposal facility [GDF] to handle decades of nuclear waste.

The cavernous dump will feature tunnels and vaults dug 200 – 1,000 metres underground, capable of holding high risk nuclear waste.

Residents fear safety concerns especially as the dump would be near the seaside resort of Mablethorpe. They're also worried that it would affect local businesses.

The search for homes for Britain's nuclear waste underlines a serious problem at the heart of its energy ambitions. Politicians have extolled the

virtues of low – carbon nuclear power, but little attention has been given to where to put the nuclear waste.

The main problem for the government is that there are a limited number of coastal places that have suitable rock volume to store the waste.

The GDF is forecast to cost between £20bn and £53bn. Work could take decades to begin and high -risk waste will not enter it till until 2075. It is expected to generate 4,000 jobs in the first 25 years.

Last year the Guardian published Nuclear Leaks, an investigation into problems with cyber security, safety and a 'toxic' culture at Sellafield. Most of the waste now at that site will be sent to a GDF, probably between 2050 and 2125.



Beckenham Housing Consultation

A development proposal has been brought to our attention on the carpark of the Spa Leisure Centre in Beckenham. More details here:

<https://www.rivingtonstreetstudio.co.uk/projects/housing/beckenham/>

We put the comments below in on behalf of BFoE and we'll be keeping a close eye on this proposal if it ever gets as far as planning.

1. Bromley Friends of the Earth welcomes the proposal for new council housing in this town centre site with good access to public transport. However it is not at all clear how other desirable options for this site were considered, in particular uses that compliment the adjoining Leisure/fitness and the Library uses. What was the process for choosing housing as the preferred option and not choosing other options? and indeed were any other uses even considered?

As minds at Bromley council now seem to be firmly made up about housing being the preferred option for The Spa site, can we request that future opportunities to develop council owned sites are publicised and consulted on many months in advance of development proposals being commissioned.

2. Will the council be losing ownership of the land that is to be developed, or will it retain ownership rights?

3. We would like to request that a report be prepared on the embodied and operational carbon factors that need to be understood for the proposed building. We would expect this report to

include the consideration of reuse of materials from Lewis House after demolition, the use of low embodied carbon materials (at least net zero in nature), and the use of heat pumps, solar energy production on site, insulation and green cooling designs.

4. What contribution will be made by the development of this site to local biodiversity and the encouragement of nature?

Bromley Friends of the Earth want to see more ambition shown when development of sites which have been degraded to the point that they contribute little to local ecology is being proposed. Ideas about 'nature positive cities' are pertinent to this; and Bromley Friends of the Earth would be very happy to collaborate with Bromley council on future policy development work in this area.

5. Local consultation. There will be a lot of interest in the planning application when it is submitted, from both local residents and people who use the leisure centre and library. We are sure that you will agree that all interested people must be given many and appropriate opportunities to comment and influence the development of this site. Can we request that a consultation plan for the planning application is published asap. There are issues that we have not considered in our response to this consultation because Bromley Friends of the Earth hasn't got the resources to create a local community view on issues such as design, height, impact on nearby residents, townscape, and access matters, and all of these matters should be included in the planning application process. The present consultation by

your commissioned service is not sufficient to provide the council with evidence of local opinion.

6. Experts by Experience. The consultation document reassures readers that Experts by Experience have already benefited from the proposal because they now have a like for like situation with premises in Bromley town centre. However we understand that this is now an out of date explanation. We think that an updated narrative about the future of Experts by Experience should be published and consulted on before conclusions are reached about the outcome of this public consultation.

Blenheim Shopping Centre

A recent planning application to build five tall buildings for 230 new homes and a number of new shops on the site of the to be demolished Blenheim shopping centre in Penge was approved by Bromley council on the 5th March 2024, in the face of significant local and borough wide opposition. News Shopper reported the issue under the heading "Penge Tower blocks approved despite 2,500 objections." Bromley Friends of the Earth supported those objecting, as the objections were due to the size of

the proposal, not against the need to build new homes. BFoE also asked for changes to reduce climate change emissions, such as installing heat pumps, using solar heating sources, and the use of sustainable, low carbon creating materials, and asked that wildlife such as plants, birds and insects be encouraged and protected by the design of the new buildings and spaces in between the new buildings. A lot more campaigning is clearly needed as Bromley town centres are likely to attract further development investment (not a bad thing) but the challenges it poses to everyone are clear, and we need to be at the centre of all those discussions and arguments. We hope to create interesting opportunities for all BFoE members and supporters to take part in deciding on the future of their communities and neighbourhoods.

Kevin Dykes

Penge High Street Development

This link will take you to the planning application result for the Penge High Street Development.

<https://www.newsshopper.co.uk/news/24172795.penge-tower-blocks-approved-despite-2-500-objections/>



Transport Campaign - Ann Garrett

A Chinese company BYD [build your dreams] is on a mission to get more UK consumers to buy their affordable electric vehicles.

It is one of the latest Chinese companies to hit the UK car market, claiming its prices are competitive and launching 3 vehicle options since it arrived here in 2023.

The company is the largest EV

manufacturer in China and now very much has Europe in its sights.

It is thought that the increased competition will lead to more people going electric on the roads.

BYD made 3.02m vehicles last year and surpassed TESLA, and its ambitious goal includes plans to sell about 800,000 cars annually in Europe by 2030.



New Forests in Bromley - *Diana Hurd*

Some of you have probably seen this already, but Bromley Council are proposing three potential sites for tree planting across the borough. There is a consultation survey running until 9th April asking for views and opinions on

the proposals. Please have a look and support the plans if you can.

Many thanks.

Diana.

<https://www.bromley.gov.uk/WoodlandEstablishment>



Planet Over Profit Campaign - *Annette Rose*

Some of us attended an online webinar for Planet Over Profit in January which updated us on this far reaching campaign. There were 45 people on the Webinar .We were reminded that there are 75 sister organisations around the world that are all focusing in these issues of company supply chains and poor company behaviour. The EU directive that is going through and the Environment Act is having little effect on improving these.

UK consumption has a huge overseas footprint. The campaign is particularly concerned about deforestation on key ecosystems and the people that live in them. Areas of concern are palm oil in Indonesia, timber in Sarawak, Borneo and Soy in South America.

FoE is campaigning with the Corporate Justice Coalition for a new UK law to protect people and planet from abuse.

I have received the new materials for the Planet Over Profit Campaign. The aim is to get the public to complete the cards

and we will send them to MPs after using them for publicity and display. Some are for colouring in and all are attractively designed. There is a section for people to complete the sentence 'Forests are important to me because...'

ACTIONS REQUESTED

If you interested in the campaign or are part of this campaign team, can you do any of the following please?

- Urge your MP to sign the Good Business Matters Pledge and visit foe.uk.dmp. To find out more visit foe.uk/planet-over-profit or see the leaflet at the next meeting.
- Collect a few of the new Planet over Profit postcards at the next monthly meeting and ask friends and family to complete them ready to send to MPs. Please return them to Annette.
- Attend our stalls and the Garden Party in June to help get more postcards completed.



Planning Consent Granted for 685 Sustainable Homes

<https://www.theguardian.com/commentisfree/2024/mar/02/phoenix-british-new-builds-housing-development-susse>



CATOR PARK TINY FOREST

On the sunny Saturday morning of 24th February, a very well organised tree planting took place in Cator Park. This was a joint venture involving Earthwatch who specialise in planting and maintaining tiny forests and the friends of Cator Park and Alexandra Recreation Ground. We first heard of this idea from Brayley Small, who has been investigating potential sites in Bromley for such planting, and it was good to actually see this scheme come to fruition.

Two teams of volunteers had been recruited and we were amongst the first ones starting at 10.30. Planting followed a brief set of instructions: plant fairly close together but no closer than a forearm's length apart, submerge the root ball beneath the surface, and pat in but do not use feet to firm it down.

We had a roughly semi-circular plot to fill with a variety of native, bare-rooted saplings. They were quite small and luckily the soil had already been dug over, so they were fairly easy to plant, even though the heavy rain had made it very muddy! Once we had planted our allotted section of the plot, it was time to cover the area with mulch to suppress weeds and help with moisture retention.

We were all done within a couple of hours; meanwhile the next lot of volunteers had already started on the other side. We had brought our own gloves/spade etc, but when we arrived, everything had been provided anyway and they had kindly organised a cake/ drinks stall as well.

This was a thoroughly enjoyable event, bringing the community, and beyond, together, and including young people and children too. We noticed that the mayor was there, so we do hope that

this will be the first of many more such events in parks across the borough.



Local children's thoughts and feelings about trees on banners in Cator Park

While at Cator Park, we took the opportunity to have a look at the area where 180 trees were illegally cut down last year. It was good to see that the felled trees had been left alone for nature to take action. Most of the severed stumps are shooting again and it is as if the trees had been coppiced. This will create a completely new ecosystem in that location with low growing

saplings and grass areas. Something positive coming from what appeared to be a terrible tragedy.



The illegally chopped-down trees are sprouting again in Cator Park

TREE PLANTING AT HAVELOCK RECREATION GROUND

The following Saturday 2nd March, Rob and I were again planting trees, this time at Havelock Recreation Ground in Bromley. We had actually helped plant the same area a few years back – but then the severe drought that followed sadly killed a number of the new trees. We were therefore filling in gaps, again with a variety of native and locally grown trees - well basically a number of self-seeded trees that I have lovingly nurtured in our back garden!

We were aided by the Friends of Havelock Rec who kindly assisted with the planting and provided materials. It was good to have trees that were suited to the conditions there: a fairly boggy area took two pussy willows, one of which had seeded itself in an old bucket that was full of water!

Now the top part of the park will once again have a complete avenue of trees flanking a path through the park.

It is great to know that we have been part of two projects which will provide a lovely, shaded walk on a summer's day; a sanctuary for wildlife; a lung for our city; and a useful carbon sink for decades to come.



A newly-planted tree in Havelock Recreation Ground



Great British Spring Clean 2024 - Annette Rose

I do hope some of our members have been able to do a litter pick this year and maybe taken a photo! It is not too late to send your photo in for next month if you missed the April deadline.

At Bromley FoE we have done some litter picking each year for a long time and it is good to carry it on as a worthwhile activity.

And if you are not sure if litter picking is a good idea....

I do understand that Idverde and the Council should be collecting this litter! However, in reality much escapes into the environment, not only by people littering but also by the wind, escapes on bin days from our recycling bins, work sites etc. If a young person has participated in a litter pick I feel they will be far less likely to drop litter in the future and will find a bin.

My 5 good reasons for litter picking.

1. Feeling part of a national campaign that makes a difference.



2. Having an immediate positive effect on the local environment.

3. If an area is clear of litter it is less likely to be added to.

4. Protecting local wildlife from the harmful effects of litter.

5. Stopping the litter getting into our drains, waterways and the sea.

In summary,

‘Litter-picking is a simple action that anyone can do. It makes an immediate and visible difference to the environment where we live, work and play. In fact around 95% of people surveyed after 2023's campaign agreed they felt they had made a difference to their local area, and 91% said they felt part of a national movement that is taking action to tackle litter. So, if you want to protect our wildlife and the places you love this spring, join the Great British Spring Clean and pledge to pick up a bag.’ From Keep Britain Tidy website





Black Mustard - Steve Fuller

During November I found a wasp flying around my front room. All run-of-the-mill wasps are long dead at this time of the year so this would be a queen wasp looking for somewhere to hunker down for the winter and the warmth of my room had bought it out of hibernation. I collected it from my curtain using a glass and placed it outside in the garden – not really knowing what else I could do with it! It was a cold night and I found to my surprise the following morning that it was still where I left it but very drowsy. Wherever it overwinters in the wild it will get cold so wasps go into a kind of suspended animation until the spring arrives. So I transferred her to my insect hotel that has a hollow area behind the usual hibernation tubes that smaller insects like to use over winter. Placing her there I suspect she will now hide away from the rain and the worst of the cold until warmer times arrive. And yes, I know not everybody likes wasp and yes, I have been stung a few times but I don't like to kill any living thing given the option.

Now, during the depths of a British winter when all seems damp and cold, there are few plants to encourage me to write about them. There is the velvet shank mushroom I wrote about in April 23 and felt something a bit more 'salady' would be nice so plumbed for Black mustard (*Brassica nigra*). For all intents and purposes this plant would be confused with the common 'rapeseed' plant grown widely across agricultural fields, complete with the startling yellow flowers. This agricultural rapeseed plant creates mustard that is more to the liking of the British public but in France the black mustard is still grown. In 13th century France the seeds were ground and mixed with unfermented grape juice (must) to create "moût-ardent" (burning must). This later became 'moutarde' or mustard in English.

I chose this plant as it begins to grow



during mid-winter but will not reach its full extent until July when it may reach a full height of over 2 m. Its lower stalked leaves are broad and bristly but smooth and narrower towards the top. It is primarily a coastal plant but can be found inland and although annual, it can often be found to populate the same areas year after year. However, as with most cabbage family plants (which includes black pepper) this plant will extract minerals from the ground and if the plant grows on old industrial wasteland then toxic elements can be incorporated into the body of the plant making it dangerous to eat. Because of this ability, Black pepper can be used to 'clean' waste areas, a process called 'phytoremediation'.

Black mustard is the only wild mustard that is unequivocally native to Britain. There are five species of mustard (black, white hedge and hoary) found in Britain if you include Chinese mustard – all different in taste but all have the bright yellow flowers. The subject of this piece is named 'Black' because the seed pods are very dark/black although once

ground up they are the usual yellow powder we associate with mustard.

This mustard has been in use for over 2000 years with Roman authors writing about how to prepare this plant pickled in vinegar. The leaves can be somewhat prickly but the newer, young leaves are more forgiving and just as peppery. It's a great salad plant but when cooked it can become bitter rather than peppery. If cooked within a dumpling it does however retain some of its 'kick'. As summer proceeds the leaves lose their palatable properties but by then the seeds mature and they can best be collected while still immature and left to ripen at home. To collect fully mature seeds risks losing most to the ground

unless a butterfly net is used. The leaves of the black pepper plant can be used to trick the uninitiated. One can offer them a leaf and invite them to chew. The leaf initially has a mild nutty taste. This is quickly followed by a peppery flavour that reaches inferno levels after about 20 seconds. Some love it, others hate it. Such plants as mustard and rocket are 'designed' to be distasteful to avoid the attention of browsers. Interestingly, the chemical that creates the hot taste is allyl isothiocyanate. However, this is itself harmful to the plant so it is stored in a harmless form but is created by hydrolysis once chewed and mixed with saliva. Hence the delayed sensation of flavour when eaten.

Steve Fuller



CAT to Close to Day Visitors

We had this sad news from the Centre for Alternative Technology recently.

We confirm with a heavy heart the closure of CAT's visitor centre to day visitors from 09 November 2023. It will remain open for students, educational group visits, events, and courses.

Sadly, 14 positions are at risk at CAT and a full consultation is taking place across at least 14 days. Staff wellbeing is of utmost priority, and we are providing specialist support to staff during this difficult time.

This decision has been made due to a number of factors, during a challenging time for the charity sector in the UK. The combination of rising running costs, reduced visitor numbers to Wales post-pandemic and funding delays have made it economically unviable to continue operating the visitor centre in its current model — despite our best efforts to mitigate these factors.

The closure of the current visitor centre to day visitors will, however, allow CAT to focus on strengthening economically viable aspects of its operations — helping us deliver on our mission to create and share practical solutions to tackle the climate and nature emergency.

CAT remains strongly committed to its proposed wider redevelopment plans, which feature significant improvements to the visitor offer. These proposals remain under consideration for funding from the Mid Wales Growth Deal and other sources. Once secured, these funds will ensure CAT can re-open to day visitors, providing additional tourism and education opportunities for the communities of Mid Wales and beyond.

In the meantime, the Graduate School of the Environment, short course delivery, group visits and Zero Carbon Britain Hub and Innovation Lab are unaffected — allowing CAT to continue its vital work in providing green skills for the future.

As a charity, CAT relies on income from visitors, learners and supporters to cover the costs of its environmental education and research provisions. If you would like to make a donation to CAT, please visit: cat.org.uk/join-donate/

For further information, including what to do if you have an existing booking or voucher, [please visit our FAQ page](#).

Thank you for your ongoing support.



Great Big Green Week 2024 - Annette Rose

Great Big Green Week is 8th-16th June 2024 and I do hope that Bromley FoE can be part of it. The Climate Coalition are organising it and many Friends of the Earth groups are taking part. The Climate Coalition has 130 members including FoE so it is a united voice in tackling Climate Change. 'Let's swap together for good' is its tagline this year. The message they want to get across is that making swaps everyday can create a better tomorrow, Do have a look at their inspiring website for lots of great environmental actions people are taking. The first Big Green Week was in 2021 and last year a quarter of a million people took part so the movement is growing rapidly.

Bromley FoE have come up with two actions we would like to do for Great Big Green Week **if we have enough support to make them work!**

1. Green Hearts Skills Swap

The idea is that people offer a skill to the other members of BFoE. They write them on a green heart shape (which will be provided.) These will be collected in the April, May and June meetings and

through the newsletter. At the June meeting, all the hearts will be displayed. People will be able to swap a skill with another person for no exchange of money. Or they could be bought for a small donation to BFoE funds.

Here are some examples of possible skills....

- Bake a cake
- Handmade greeting cards
- One hour's gardening
- Read a story
- Do some shopping
- Repair an item of clothing
- Paint a picture
- Knit a scarf

The list is endless! Green Hearts will be provided at the next monthly meeting so please put your thinking caps on.

2. Pre-loved Fashion Swap.

At the garden party we hope to run a Pre-loved Fashion Swap and the details are still to be planned. But please put aside a few good quality items you no longer want for the 22nd June. Thank you.



HELP! - Bromley FoE Need a Treasurer

Following our February AGM, and Sheila hoping to stand down, after very many years of being, as well as so many other Bromley FoE posts, a great treasurer, we are looking for someone willing to take over the role. If you would be willing to give it a go then please let us know.

The job entails keeping a record of all financial incomings and outgoings, collecting and banking monthly hall collections, paying expenses and

donations and drawing up year-end accounts. If you are interested, please email bromleyfoe@gmail.com for a full job description.





Orpington Bus Proposals - Consultation update

Following the public consultation held between 20th September and 1st November 2023 proposing changes to bus routes R1, R2, R3, R6 and B14 in the London Borough of Bromley.

The proposals were presented in three parts:

- Proposal 1: reroute the R3 via Towncourt Lane in Petts Wood
 - Proposal 2: withdraw the R2 and replace it with changes to routes R1 and R3
 - Proposal 3: withdraw route R6 and replace it with changes to route B14
- 445 responses were received to the consultation. Following careful consideration of the consultation

responses and a further review of what was proposed and the costs involved, TFL have decided not to proceed with changes to routes R1, R2 and R3 as these no longer represent value for money.

TFL have published their [consultation report](#) which confirms the decision not to proceed with Proposals 1 and 2. The report also includes our response to the key issues raised in response to these proposals.

A decision has not been reached as to how TFL may proceed with Proposal 3 which remains subject to the receipt of bus operator costs. A decision is expected later in 2024.



Interesting Article Links

New material found by AI could reduce lithium use in batteries
<https://www.bbc.co.uk/news/technology-67912033.am>

Move to sustainable food systems could bring \$10tn benefits a year, study finds
<https://www.theguardian.com/environment/2024/jan/29/sustainable-food-production-economic-benefits-study>

Solution to dazzling car headlights
<https://www.motorcyclenews.com/news/2024/january/car-headlights-brighter-investigation/>

Three quarters of drivers blinded by other's headlights - and a third say

they're dazzled by TRAFFIC LIGHTS
<https://www.thisismoney.co.uk/money/cars/article-13132003/Drivers-blinded-headlights-dazzled-TRAFFIC-LIGHTS.html>

When wind turbine blades get old what's next? - BBC News
<https://www.bbc.co.uk/news/business-68225891>

Ecosia Search Engine

The Ecosia internet search engine plants trees every time you use it for an online search. Recently they hit a total of 200 million trees planted. Here's a short film telling us about this achievement.
<https://youtu.be/VLJYTHM5TP4?feature=shared>



More on Warm Homes - *Helen Loughlin*

The March newsletter contained the text of my letter to Ellie Reeves, MP, setting out my disappointment at Labour's U-turn on its commitment to spend £28 billion a year on green investment and the resulting huge cuts to the party's home insulation scheme. Ellie has now replied (see below) and, in return, I have sent her a copy of the report, "Left out in the cold: the hidden health costs of Britain's cold homes", which was commissioned by Friends of the Earth. My email highlights some of the report's key findings and contains a link to the full report, which some members may be interested to read – and even to forward to their own Bromley MPs!

Dear Ellie

Thank you for your reply. I appreciate the fact that you recognise the importance of green power and the need to insulate homes.

As you may be aware, Friends of the Earth commissioned Professor Sir Michael Marmot's Institute of Health Equality to publish a new report, "Left out in the cold: the hidden health costs of Britain's cold homes." It examines the latest evidence and most recent findings on the mental and physical health impacts of cold homes. I am sending a link (below) and hope you will have time to read it.

Key findings include the following:

- New analysis finds 9.6 million UK households are living in heat-leaking, poorly insulated homes and have incomes below the minimum required for an acceptable standard of living
- Cold homes double the risk of adults developing new mental health conditions and put 1 in 4 children at risk of multiple mental health

symptoms

- Tens of billions of pounds a year in costs to the NHS and lost productivity, would be saved by investing £6bn annually in a national insulation programme, which is needed alongside urgent action to reduce hardship and address high fuel costs

I continue to hope that if Labour do come to power at the next election, action will be taken to rectify the current dire state of affairs.

[https://cdn.friendsoftheearth.uk/sites/default/files/downloads/Left out in the cold full report v3.pdf](https://cdn.friendsoftheearth.uk/sites/default/files/downloads/Left%20out%20in%20the%20cold%20full%20report%20v3.pdf)

Helen Loughlin
(Sent 17 March 2024)

Dear Helen,

Many thanks for your email and I appreciate you taking the time to write.

Our Green Prosperity Plan and its associated 28-billion-pound spending was put forward several years ago at a time when the economy was in a different place. Since those announcements were made the Tories crashed the economy with Liz Truss's mini budget, which caused market chaos, sent debt soaring and interest rates spiralling by a factor of more than 50 from 0.1% to 5.25% today.

It would be irresponsible to not adapt our plans to changing economic circumstances and with a very different economic landscape we have to be realistic about the challenges an incoming Labour government would face and the state of the country's finances. Despite this we still have a plan to set up GB energy, a publicly-owned energy

company to invest in clean homegrown power delivering cheaper bills, and to form a National Wealth Fund to invest in green industries and the jobs of the future and we would still deliver a national Warm Homes Plan to deliver up to 5 million home upgrades.

Whilst this is a slower initial roll out than we had hoped to deliver this programme doubles the funding the Government has already committed to this, and will go street by street, installing energy saving measures such as loft insulation and low-carbon heating, saving families on low-incomes hundreds of pounds per year and getting Britain back on track to meeting our climate targets.

Our investment will be split between: energy efficiency grants, delivered hand-in-glove with local authorities to target the areas and families in most need; government-backed zero-interest loans

for green home upgrades like solar panels; and grants to make sure heat pumps are affordable for people who want them.

The Conservatives are willing to lie about the damage they have done to the economy, but we are not. The choice at the next election will be between five more years of Conservative chaos and economic failure or a Labour party that has a mission to deliver clean power by 2030 and economic security and growth.

Thank you for contacting me about this incredibly important issue.

Best wishes,

Ellie

*Sent on behalf of Ellie Reeves MP
Member of Parliament for Lewisham
West and Penge (Sent 8 March 2024)*



Red Kite Spotting- Judy Palmer

I recently had the amazing experience of seeing a red kite out of my window! I live in a flat in St Mary Cray, on the third floor, and as I glanced out of the window one day recently I noticed this beautiful bird soaring up across the road and over the skyline, being chased by a seagull!

I was totally amazed to see one in such a built up area and I scanned the skyline around to see if I could follow his progress, and there it was, a lovely forked tail in profile, wafting about in the thermals.

I have been reliably informed by two or three people that spotting

them is a fairly regular occurrence in the borough now, but what a treat. There was a man walking down the road at the time of the kite's flight, and I bet he won't forget in a hurry seeing this bird flying up a few feet away from him!





Supplies That Don't Cost the Earth

No/Low Waste or Refill Shops

The Green Room Online shop only now is delivering household product bottle refills: <https://www.javaandchai.com>

SWOP Shop WithOut Packaging A wide range of the usual refills in Lee Green opposite Sainsbury's: <https://www.swop.market/>

Beldi Maison 11 Sundridge Parade, Plaistow Lane BR1 4DT (Sundridge Park Station): <https://beldimaisoninteriors.com/>

Laura's Larder, 3 Fairway, Petts Wood BR5 1EF: <https://www.lauraslarder.co.uk/>

Herbivore, Southborough Lane, Bromley: <http://www.carnivorefoods.com>
herbivorebromley@gmail.com 020 8460 9647

Art of Zero Living 7a Greenwich Market SE10 9HZ: <https://artofzeroliving.uk/>

Repairs

Orpington IT Centre, 92 High St, Orpington BR6 0JY
(Opposite Aynscombe Angle)
www.orpingtonitcentre.co.uk

Repair Café St. Mary's Church hall, Worlds End Lane, Green Street Green BR6 6AG

Donate Your Tech

Clearcommunityweb:
<https://clearcommunityweb.co.uk/donate-your-tech/>

Internet

Greener & Cleaner Consumer action!
<https://www.greenerandcleaner.co.uk>

Peep Eyewear revitalise vintage frames or recycle those that can't be reused: <https://www.peepeyewear.co.uk/peep-donation-address>

If You Care products including recycled

tin foil and sandwich bags:
<https://buyifyoucare.com>

Peace With the Wild - Household products:
<https://www.peacewiththewild.co.uk>

My Green Pod - Wide range of biodegradable and natural products:
<https://www.mygreenpod.com>

Ethical Superstore - 'Ethical' products news and advice:
<https://www.ethicalsuperstore.com>

Green Finder - a useful directory of environmental companies for all kinds of things:
<http://www.greenfinder.co.uk>

Naturallythinking, Unit 2 Mill Lane Trading Estate, Mill Lane, Croydon, CR0 4AA, 020 3856 3588:
<https://naturallythinking.com>

Crowdfarming, wide selection of directly supplied products from farmers around the world, many organic:
<https://www.crowdfarming.com/en>

Zero Waste Path. Soaps and other toiletries made in Scotland. Handmade, vegan, palm oil free, natural, plastic free, circular, cruelty free and renewable energy:
<https://www.zerowastepath.co.uk>

Just Think Eco. All sorts of eco household products:
<https://www.justthinkeco.com>

Olio sharing app. Share anything you have in excess with nearby people. Includes free food and other items.

Bike recycling

Refurbished bikes sent to Africa:
<https://www.re-cycle.org>

Wood

South London Wood Recycling Project. Wood saved from the tip at low cost:
<https://solowoodrecycling.co.uk/>



The Big Plastic Count - Judy Palmer / Ann Garrett

Hello everyone,
With apologies to those of you who have already seen this, but for those of our members who did not do the Big Plastic Count this year, we thought that you may be interested in reading the data which comes out of just one person's count.

We are all aware of the problems associated with plastic waste, but here it is broken down and it gives a stark reminder in print of the amount of plastic we use in our daily lives.

Thank you Ann for sharing this information, and congrats on a low count!
Judy, Admin Team

Thank you so much for taking part in The Big Plastic Count!

Your data will be invaluable in showing the UK government that the plastic waste crisis is still with us - and that the only solution is a big reduction in the amount of plastic that's being produced.

It can also provide you with a unique insight into your household's plastic packaging footprint. Below you can see more about what type of plastic you used, and what's likely to happen to it. If you took part last time as well, you can compare your household's footprint from 2022, with 2024's.

But remember, this isn't about feeling guilty about how much plastic packaging you used. Too much plastic is produced by supermarkets and big brands, and we have very little choice about what our food and other essentials come wrapped in.

ANN'S PLASTIC FOOTPRINT

In one week you used 19 bits of plastic

Over a year that's equivalent to 968 pieces of plastic

If all households were the same as yours, the UK would use 27,762,800,000 bits of plastic every year

Imagine the volume of plastic being created globally, over years and years. That's why we need the governments across the world to agree to a Global Plastic Treaty which cuts plastic production. This would mean less plastic litter in our parks and green spaces, fewer incinerators polluting our air, and less of our waste being dumped abroad.

What was your plastic packaging waste used for?

<i>Food & Drink</i>	89%
<i>Cleaning & Toiletries</i>	0%
<i>Everything Else</i>	11%

Most plastic packaging is single-use - designed to be used once and then thrown away. For a lot of people, plastic packaging from food and drink will be the highest percentage. If supermarkets reduced the amount of fruit and vegetable wrapping, it would significantly cut single-use plastic waste.

What was your breakdown of hard and soft plastic?

47% of your plastic was hard plastic
Hard plastic is a lot easier to recycle than soft plastic. While hard plastic is recyclable, there are still many items that are less likely to be recycled, such as soap bottle pumps, polystyrene chips and toothpaste tubes.

53% of your plastic was soft plastic

Just 12% of local councils in the UK collect

soft plastic, like plastic bags, and wrappers. Do you know if yours collects it?

66% Incinerated

What happens to your plastic packaging waste?

11% Recycled in the UK

Plastic waste that is sorted and reprocessed in the UK and then turned into new materials. Since The Big Plastic Count in 2022, the UK is reported to be recycling more domestically.

10% Exported

The UK sends tonnes of rubbish to other countries every day, with Turkey the main destination. Since The Big Plastic Count 2022, the UK is reported to be exporting less. However, lots of UK waste is still being found abroad, so this figure is likely to be an underestimate.

13% Landfilled

When plastic is buried in the ground at a landfill, it releases harmful gases into the atmosphere, while wind and rain carry microplastics into surrounding areas. The UK is now sending less to landfill than in 2022, as landfill sites are running out of space.

Burning or incinerating plastic releases carbon, toxins and pollutants into the air, presenting numerous health risks for local communities and contributing to climate change. More plastic waste is being burnt than ever, as a means to manage the sheer amount of plastic in our system.

We're now going to spend the next few weeks crunching all the data that's coming in - we'll be back in touch in April, to let you know the overall national picture of what's happening to our plastic, and more ways that people power can help us get the strong and ambitious Global Plastics Treaty we need.

In the meantime, if you want more information on how to keep campaigning on plastic waste, and tips to reduce your own plastic use if that's possible for you, check out this guide.

<https://thebigplasticcount.com/media/GP-TBPC-Refill-Reuse-Reduce-Handbook-2024-Accessible.pdf>

*Thanks again for all your hard work!
Dan and The Big Plastic Count team*



Greener & Cleaner Hub - Parisa Wright

Here's an update on the Greener & Cleaner Hub in Bromley Glades from Parisa Wright from facebook. They are suffering a funding crisis so there's a facebook donation link at the bottom.

Here's my TEDx Talk about how and why I helped found this charity and our vision for helping communities across the UK with the Community Hubs model we are creating for shopping centres:
<https://youtu.be/onrmvMQcjhg?si=8MQpwoaq8jfo5AOs>

At Greener & Cleaner we are working hard

at the moment to ensure the continuation of our popular Community Hub where we are supporting communities in South East London with:

- disconnectedness. loneliness and isolation;
 - cost of living;
 - mental and physical wellbeing; and
 - employability,
- all while normalising active engagement with sustainable living and building community resilience!

Here's the space - a resource for S.E.London now and a pilot to help other

communities: <https://www.greenerandcleaner.co.uk/the-hub-from-greener.../>

What others say: <https://www.greenerandcleaner.co.uk/about-us/our-impact/>

Since March 2022 the Community Hub has touched the lives of 24,000+ adults and children through sustainable living advice, sustainability skills training and social events, volunteering opportunities and schools support five days a week. PAM (she now has confidence and community and teaches local kids and

younger people to knit, crochet and sew at the Hub): <https://www.youtube.com/watch?v=hsdkvQMLlww>

Refiat: <https://youtu.be/cA0adJ7qfP4?si=dGYDGFv1Khwk2A8A>

All support HUGELY appreciated xxx Parisa's birthday fundraiser for Greener and Cleaner

<https://www.facebook.com/parisa.wright/posts/pfbid02P2kLUBspkr2QQ6iF4uSxTzz3E1CrBp8UxbH6cDgY8ksZSriSHHaLsjy4cks2e1h1>



Reviving Our Re-User Column - *Sheila Brown*

As Friends of the Earth, surely recycling and reusing pre-loved items is something close to all our hearts, so that when we do have something surplus to requirements we try to re-home it rather than taking it to the tip? Similarly, if we are seeking a particular item, why not

ask BFOE members if they can help? A child's car seat was recently re-homed in this way with a contribution to BFOE funds. So if you are spring cleaning and turning out cupboards, maybe re-home some of your items via this column.



Greener Greenwich & The Asian Hornet - *Anne Clark*

The other Saturday I popped down to the Greener Greenwich Community Network's "Let's Grow Together Day" at the Stables, Charlton House, which was very informative with talks on 'alternatives to pesticides, and community action'; the 'Trees of London' was certainly an eye opener as I thought the main variety was the London Plane, but evidently there are many others ranging from Bean trees, Strawberry trees, Hawthorn, blossom trees Chestnut, certain conifers all with their own reasons why they are where they are in central London. Books were being sold on the subject and the speakers were excellent including a lady showing us which plants to grow for certain dyes - she dyed oddments of cloth to make scarves, cushion covers and made paintings & prints too.

After lunch we browsed over the seed swapping table & I brought home a

welcome selection of beans to grow. The talks ended with a warning about the Asian Hornet, which with climate change, is making it's home in Spain & France, but DEFRA is trying it's best to stop it taking over in Britain, so if seen, try & photograph & inform alertnonnattive@cah.ac.uk OR www.nonnativespecies.org/alerts/asianhornet as evidently they come & trace it's nest.

It is smaller than the European Hornet with a darker (black) body, one orange/yellow band (4th segment) and yellow 'socks' on each leg. Very likely to be seen hovering in front of bee hives, Camellias or in Autumn, flowering Ivy. Please help our bees by keeping an eye out for them, as they don't just eat the honey, but the bees and other insects too!

For more information on the Asian Hornet please see the following pages.

Asian Hornet nest identification

Asian hornets produce two types of nest, primary and secondary:

Primary nests:

- Spherical with a small entrance hole at the base, usually 5 to 10 cm in diameter.
- Built in spring by a lone Asian hornet queen, usually in a protected place such as brambles, a hedgerow, or in / on a building.
- **All primary wasp and hornet nests look similar, only report primary nests if seen with Asian hornets. To identify a nest, watch for insects from a safe distance.**

Secondary nests:

- Pear-shaped, entrance hole halfway up the nest, up to 60 cm wide x 80 cm tall.
- Usually found in trees, may also be in buildings and hedges.
- **Use binoculars to identify secondary nests from a safe distance. Do not disturb suspected nests and retreat from any wasp / hornet nests if flying insects are observed.**

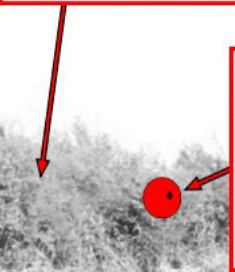
Asian hornet,
Vespa velutina



Primary nest. All primary wasp and hornet nests look similar. **Only report if seen with Asian hornet.**



Secondary nests in a tree canopy in summer (left)



Secondary nest in a hedge



Secondary nest in a building



Alert!

Report sightings of Asian hornet and suspected nests:

- with the iPhone and Android recording app: **Asian Hornet Watch**
- online at: nonnativespecies.org/asianhornet
- by email: alertnonnative@ceh.ac.uk

For assistance with identifying a suspected Asian hornet nest, or to help identify nests, please contact your local Asian Hornet Team (AHT).

Report Asian hornet:



Find an AHT:



Nests of similar species

Secondary Asian hornet nests may be confused with other wasp and hornet nests, or objects in trees. If you suspect you have seen an Asian hornet nest, please use binoculars to check from a safe distance before reporting. See overleaf for details of where to report nests and how to get help with identifying a potential nest.

Asian hornet, *Vespa velutina*

Secondary nest:

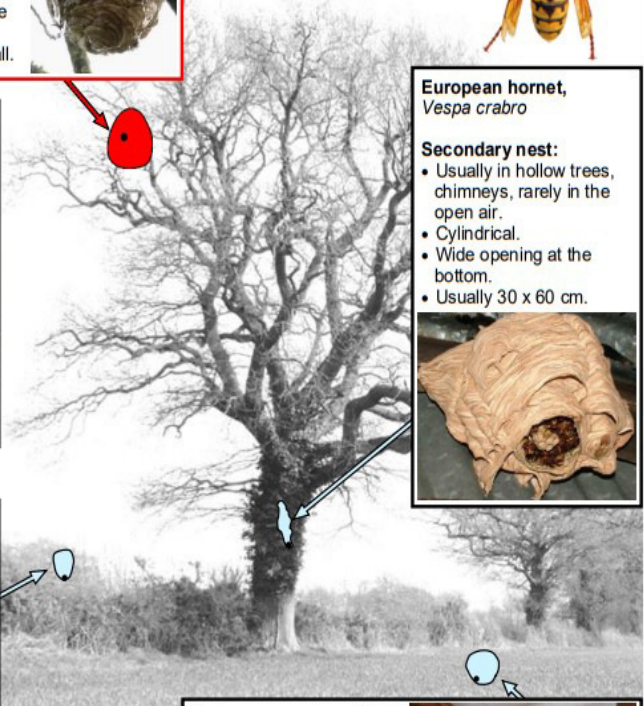
- Usually found in trees, may also be in buildings and hedges.
- Pear-shaped.
- Entrance hole halfway up the nest.
- Up to 60 cm wide x 80 cm tall.



Other objects in trees

- Crow and magpie nests.
- Mistletoe.
- Squirrel dreys.

Bird nest in a tree:



European hornet, *Vespa crabro*

Secondary nest:

- Usually in hollow trees, chimneys, rarely in the open air.
- Cylindrical.
- Wide opening at the bottom.
- Usually 30 x 60 cm.

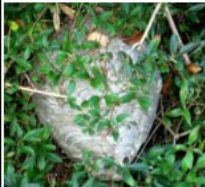


Median wasp, *Dolichovespula media*



Secondary nest:

- Usually in bushes that are less than 2 m tall.
- Conical.
- Small opening at lower end, off centre.
- Usually 20 x 25 cm.



Primary nest:

Characteristic tube-shaped entrance (unlike primary Asian hornet nest).



Common wasp, *Vespula vulgaris*



Secondary nest:

- Usually on the ground, or in confined spaces in buildings.
- Round to conical.
- Small hidden opening at the lower end.
- Usually 30 x 35 cm.



All image credits. Tree image adapted from: Trees in a hedgerow by Marathon, CC BY-SA 2.0 <<https://creativecommons.org/licenses/by-sa/2.0/>> via Wikimedia Commons. Asian hornet primary and winter nest images: John de Carteret - Jersey. Secondary Median wasp nest image: Sarah Smith / A Euro-wasp nest - Pendero, CC BY-SA 2.0 Generic, via Wikimedia Commons. Primary Median wasp image: Karen McCartney. Common wasp nest image: David Jones. Other nest and insect images: Crown Copyright.

Here is the next card in the series produced by the Bromley Climate Alliance of which Bromley FoE is a member. Each cardt highlights a common trope about our various causes and debunks them. Very useful if you are debating with a sceptic.

POLICY PERFECTIONISM

"We should seek only perfectly-crafted solutions that are supported by all affected parties; otherwise we will waste limited opportunities for adoption."

Politicians love to use this as a rhetorical excuse to do nothing. Whatever the policy, it will cause strikes, riots, and the country will be paralysed'. First of all, if a policy aims to change things for the better, and it is not accepted by public opinion, it's arguably because the political communication strategy is flawed.

It delays legislative action by referring to potential regulatory risks, imperfect policy design or potential economic costs. It argues we need more and more time to make better and better policies – ideally at a very high level of ambition and coordination. The potential loss of popular support is used to deflect responsibility. 'If we rush policies, public support is damaged and we can't do anything'. Remember also during these processes how the lobbyists play an unsettling and very influential role.

But there are, of course, plenty of examples of good policy and collaboration between and within governments. Whether constraining the use of fossil fuels can be added to that, and whether the Paris agreement actually turns out to be honoured is a reflection of our politicians and remains to be seen.

BROMLEY CLIMATE ACTION ALLIANCE

email: BCAAlliance@protonmail.com

'What's stopping you?'
A series of 12 cards on 'Discourses of Climate Delay'. References follow the QR code.



POLICY PERFECTIONISM

WE SHOULD SEEK ONLY PERFECTLY-CRAFTED SOLUTIONS THAT ARE SUPPORTED BY ALL AFFECTED PARTIES ...

"OTHERWISE WE WILL WASTE LIMITED OPPORTUNITIES FOR ADOPTION."



Fig. 9.
Policy Perfectionism

(Creative Commons BY-SA 4.0)

#9 IN A SERIES OF 12 CARDS: COLLECT THEM ALL.



List of Roles and Contacts

Everyone can be contacted via the group's email address: **bromleyfoe@gmail.com**

Co-ordinators:

Rob Clark 020 8289 1503
Helen Loughlin 07951 062016

Treasurer (temporary):

Sheila Brown

Press Team:

Ann Garrett, Annette Rose

Programme Organiser:

Sheila Brown

Outings Organisers:

John & Sue Bocock 0208 290 0485

Merchandising:

Anne Clark

Membership Secretary:

Dan Sloan 07414 920920

Social Media Admins:

Emmanuelle Coetzee - Twitter
Bethan Clark - Instagram
Judy Palmer, Robert Clark - Facebook

Admin Team:

Judy Palmer, Rob Clark, Annette Rose

Bromley Environmental Network Reps:

John Pavitt, Judy Palmer

Bromley Civic Society Rep:

Ann Garrett

Cleaner & Greener Reps:

Helen Loughlin, Judy Palmer

Bromley Climate Alliance Reps:

Ann Garrett, Diana Hurd

Website & Technical Support:

Peter Gandolfi

Meeting Reporters:

John & Sue Bocock, Anne Clark,
Annette Rose, Peter Gandolfi,

Sheila Brown, Ruth Fabricant,
Michael Hall, Liam Redmond - futher
volunteers for this team, always
welcome.

Refreshments

Vacant.

Newsletter Production:

Dan Sloan

Newsletter Editor:

Dan Sloan 07414 920920
stopkillingtheplanet@gmail.com

Campaigns: You can join one of the
campaign teams at any point if you are
interested. Just contact us via our main
email address or speak to one of us at a
meeting.

Campaign leads in bold - specialisms bracketed

Campaigns Administrator:

Judy Palmer

CLIMATE & ENERGY including the Energy Crisis and Recycling:

Ann Garrett, Anne Clark,
Paul Garratt, Helen Loughlin,
John Pavitt, Annette Rose

NATURE & ENVIRONMENT:

i) Diana Hurd (trees) , Anne Clark,
Rob Clark, Ruth Fabricant, Paul Garratt
Judy Palmer

ii) Planet over Profit

Annette Rose, Diana Hurd,
Helen Loughlin, John Pavitt

SYSTEM CHANGE:

i) Development & Planning

Kevin Dykes, Rob Clark,
Tamara Galloway (Planning),
Ann Garrett, Dermot McKibbin

ii) Ruth Fabricant (Anti racism),

Helen Loughlin



Non-Members Section

If you are not a member of Bromley Friends of the Earth (BFoE) then hello to you. We are an active local group affiliated to national Friends of the Earth concerned with promoting the understanding of environmental issues. We also campaign on these issues at a local, national and international level.

If you would like to know more about who we are and what we do, please contact either of our acting co-ordinators Rob Clark or Helen Loughlin (their details are inside the back page of this newsletter). Alternatively you can come along to one of our monthly meetings held on the first Tuesday of every month at the Friends Meeting House, Ravensbourne Road, Bromley - that's towards the bottom of the High Street, on the right going down. If you would like to join us then please fill in and send us the form below.

Membership Application/Renewal Form

I would like to support Bromley Friends of the Earth and enclose my annual subscription (£10 single/£18 couple/family, or £11 single/£19 couple/family if paying by PayPal) I also enclose a donation (optional) of £..... to help towards the work of our local group.

Name:

Address:

Post Code: Phone No:

Email address:

Do you have any hobbies or interests that may be of use to the group?
.....

Please return this form to: Bromley FoE, 2 Bucks Cross Cottages, Chelsfield Village, Orpington, Kent BR6 7RN. Other enquiries regarding the group should be sent to bromleyfoe@gmail.com or contact one of our co-ordinators via their details inside.

Bank Details: Name - Bromley Friends of the Earth A/C: 06342260 S/C: 77-91-48